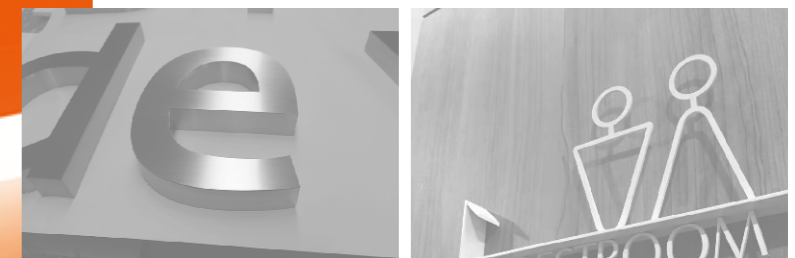


# YIJIAO 亿角

LETTER SIGN

FOR THOSE WHO WANT  
HIGH QUALITY

视觉硬件解决方案



江苏省昆山千灯镇西纬路19号4#厂房

Factory Building 4, No.19, Xiwei Rd., Qiandeng Town, Kunshan, China.

Tel 0512-57055166 Fax 0512-57055167 E-mail sales@yijiaochina.com

[www.yijiaochina.cn](http://www.yijiaochina.cn)

[www.yijiaochina.cn](http://www.yijiaochina.cn)

“Do one thing at a time, and **DO IT WELL**”

# YIJIAO 亿角



**YIJIAO** is established in 2008, now is a professional signage manufacturer in China. We are dedicated to providing the best level service along with quality illuminated and digital signage products and all kinds of light signs.

Since 2008, we continuously implement new technologies and ways of labour organization, even the most demanding customers.

Our rich experience on the sign industry ensures your signage project delivered on time and on budget.

**YIJIAO** is building a long lasting reputation on quality, reliability and cost effectiveness throughout.

We are working to make a living, but also to contribute to society with traditional values and joy of making sign, with a sense of achievement and happiness, we put our heart to every letter.

亿角 创立于2008年, 至今已成为中国专业的标志制造商, 力求在小量生产中实现多品种和高质量产品的低成本生产。

从2008年至今, 我们从未间断对于新工艺及小细节的研究改进, 挑战最严苛的标准, 无限接近完美。

丰富的行业经验使得您的标志成品符合实用要求又符合美学要求, 专业的团队确保您的交期及质量要求。

亿角 长期致力于树立品质、服务、诚信的行业口碑。

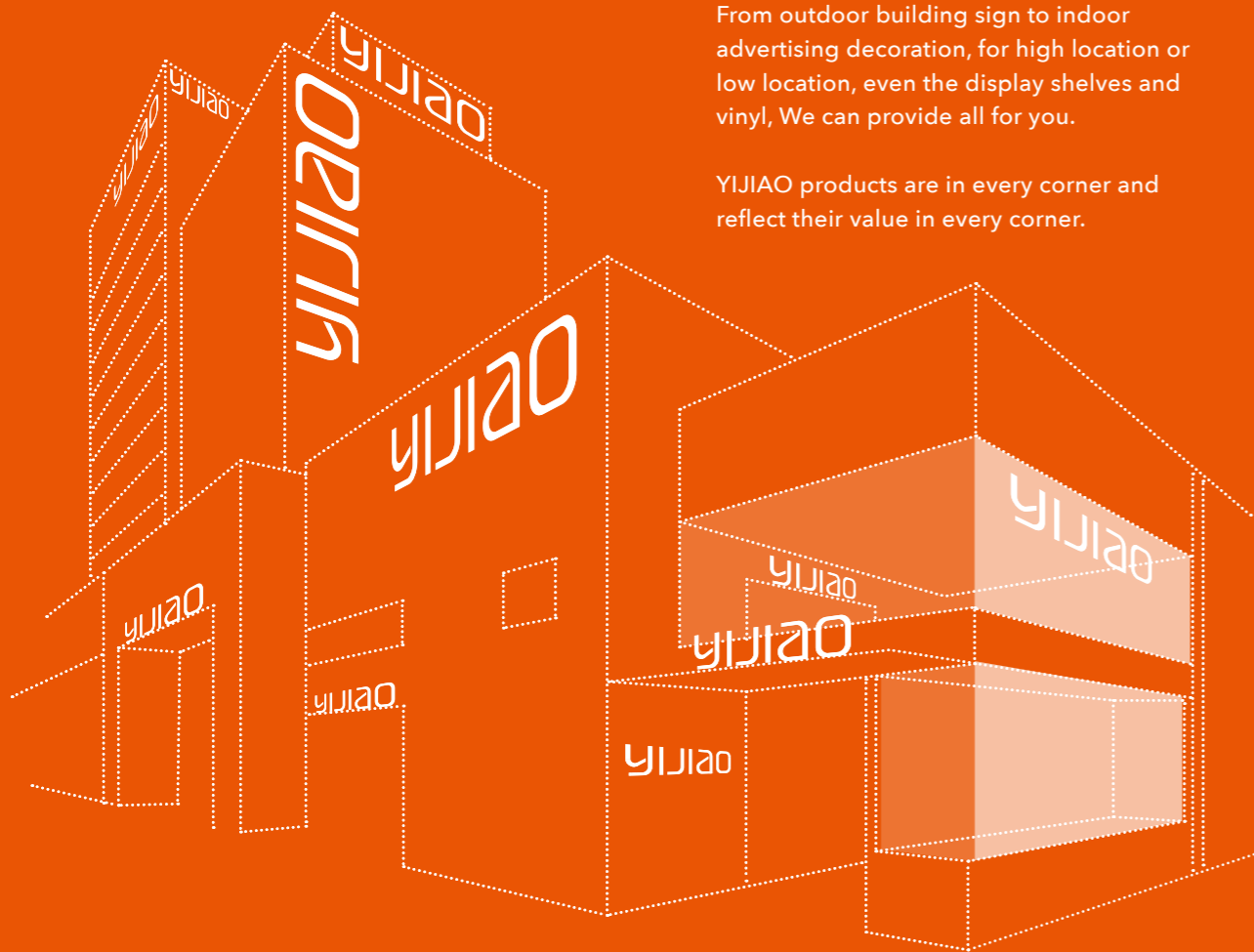
我们不仅仅是为了生活而工作, 更是在寻找标志制作过程中的快乐, 在工作中找到成就感和幸福感, 我们用匠心做好每一个字。

## 我们只专心做一件事 标志工艺深化与制造。



## OUT-DOOR *sign*

大楼、高塔建筑招牌标志灯箱



From outdoor building sign to indoor advertising decoration, for high location or low location, even the display shelves and vinyl, We can provide all for you.

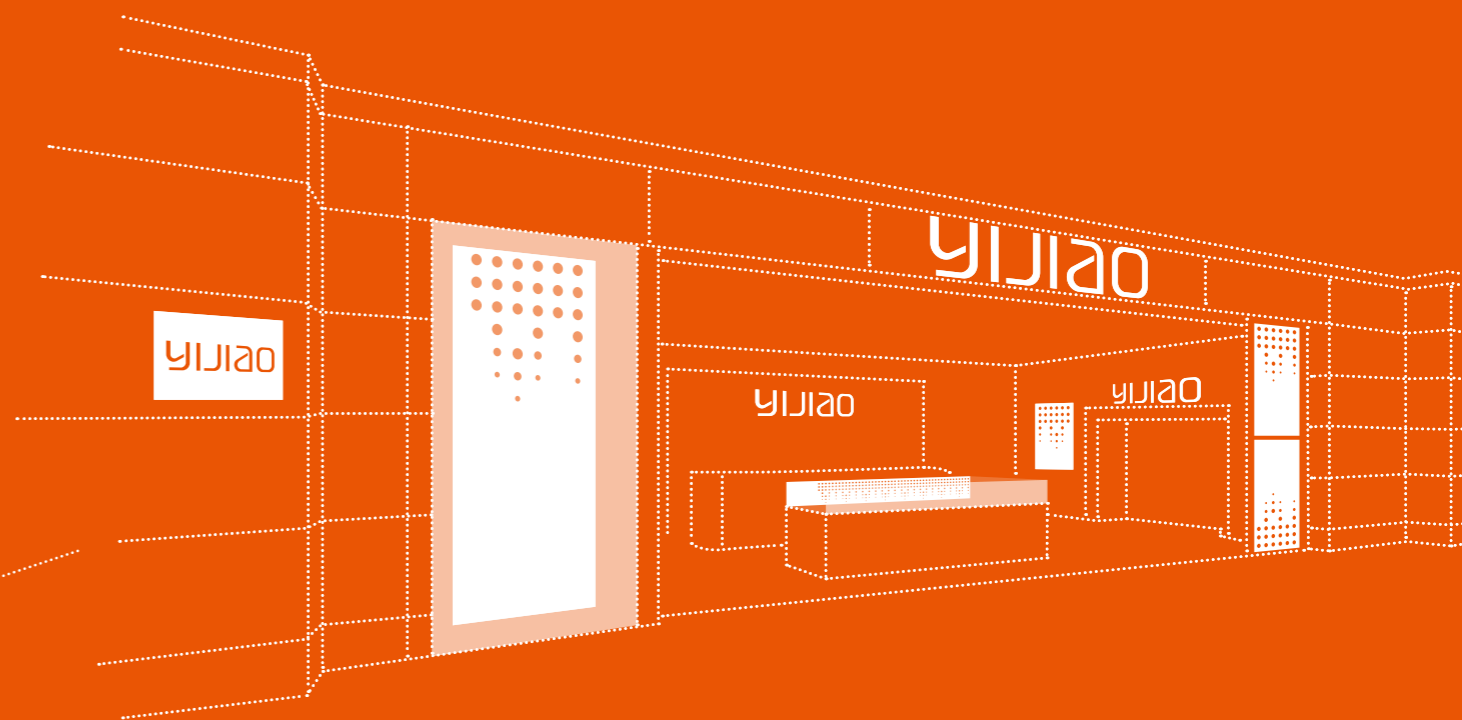
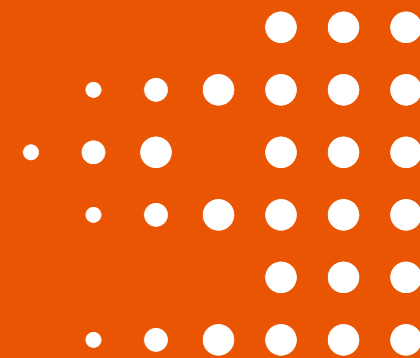
YIJIAO products are in every corner and reflect their value in every corner.

## WHAT WE DO

### 亿角标识 无限表示

从户外建筑标识到室内广告装饰，位于高处的或是低处的，甚至是展示道具和贴膜，我们都能为您解决。

亿角的产品存在于每个角落，并于这些细微处给客户带来价值。



## DIS-PLAY *LOW LOCATION sign*

低楼层招牌标志灯箱

## CHAIN STORE *sign*

连锁商店招牌标志灯箱

## DECO *DECORATIVE applications*

壁贴装饰、玻璃卡典、导引牌物件

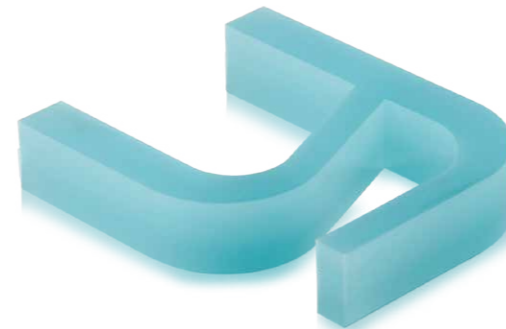
# 亚克力切割字

Acrylic Cut Letter



YJ-N101

**亚克力切割字 (薄)**  
Flat Cut Acrylic Letter (thinner)



**亚克力切割字 (厚)**  
Flat Cut Acrylic Letter (Thicker)

## ACRYLIC COLORS



尺寸 Size	整体厚度:	2~30mm 可选
	The Overall Thickness	2-30mm Optional
颜色 Color	最细笔画宽度:	3mm
	The Finest Stroke Width	3mm
颜色 Color	亚克力颜色:	Acrylic lab-dips
	Acrylic Color	
	表面处理:	贴膜 / UV 打印 / 金属切割字
	Surface Finish	Stick Vinyl / UV Printing / metal cut letter
	侧边处理:	烤漆 *
	Edge Finish	Painting*

1. 侧边颜色可选色系: Edge Painting Color Series Option

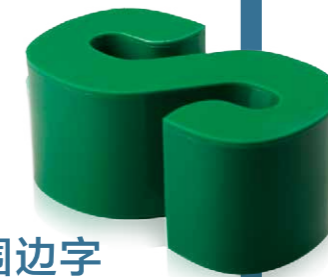
PANTONE® RAL NOS

2. 贴膜颜色可选色系: Vinyl Color Series Option



## CHANNEL LETTER

Acrylic

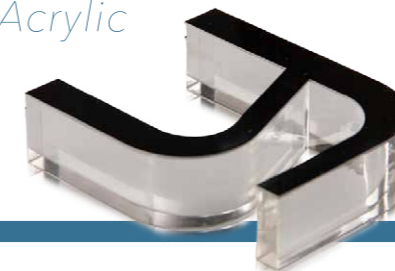


YJ-N105

**亚克力围边字**  
Acrylic Channel Letter

## STICK VINYL

+ Acrylic

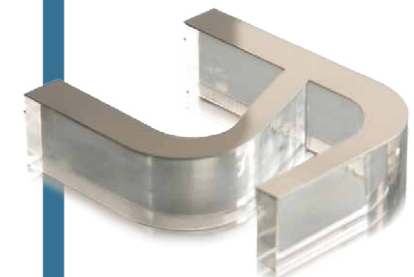


YJ-N103

**亚克力切割字 + 贴膜**  
Flat Cut Acrylic Letter + Vinyl

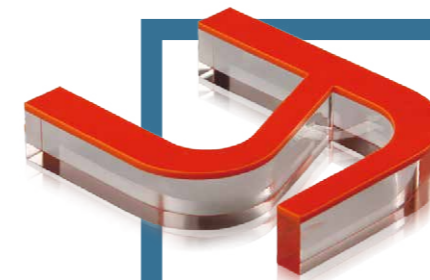
## STAINLESS STEEL

+ Acrylic



YJ-N104

**亚克力切割字 + 不锈钢**  
Flat Cut Acrylic Letter + Stainless Steel

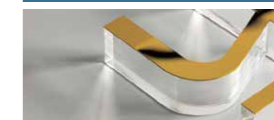


**DOUBLE Acrylic**

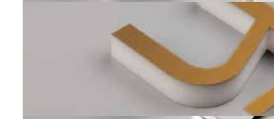
YJ-N102

**水晶字 2层亚克力切割字**  
Crystal Acrylic Letter-2 Layers of Acrylic

## STAINLESS TEXTURES



金色镜面  
GOLD Mirror / quality 304



金色拉丝  
GOLD Brushed / quality 304



银色镜面  
SILVER Mirror / quality 304



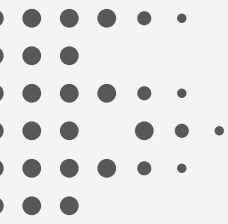
银色拉丝  
SILVER Brushed / quality 304



铜色镜面  
BRONZE Mirror / quality 304



铜色拉丝  
BRONZE Brushed / quality 304



# 金属字

Metal Letter



YJ-M201



YJ-M202



切面  
Sections



尺寸 Size	整体厚度: The Overall Thickness	2~30mm 可选 2-30mm Optional
	最细笔画宽度: The Finest Stroke Width	8mm 8mm

造型 Surface Shapes	Prismatic Letter	Beveled Letter	Curved Letter
型号			
切面 Sections	Return		
	No Return		

## Metal Color

COMBINATIONS	2B	N4	N8	HL	PO
SUS 304	X	X	X		
SUS 316			X	X	
TITANIUM GOLD(BRASS)			X	X	
TITANIUM ROSE GOLD (COPPER)			X	X	
TITANIUM BRONZE				X	
TITANIUM BLACK				X	
COPPER	X		X	X	X
BRASS	X			X	X
ZINCCORE	X				
STEEL	X				

BRASS is also available an aged look.

2B: Millfinish as it produced by the mill without surface treatment

N4: Satin finish with brushed 180 grid.

N8: Mirror machine polished surface.

HL: Satin finish with long hairline brush 360 grid.

PO: Mirror hand polished surface.

304: Stainless steel grade 304

316: Stainless steel grade 316, also called Marine Grade.

## STAINLESS TEXTURES



金色镜面  
GOLD Mirror / Quality 304

金色拉丝  
GOLD Brushed / Quality 304



银色镜面  
SILVER Mirror / Quality 304

银色拉丝  
SILVER Brushed / Quality 304



铜色镜面  
BRONZE Mirror / Quality 304

铜色拉丝  
BRONZE Brushed / Quality 304



多种类材需求接受订制  
Various materials need to be customized.

# 发光字

Luminous Letter

## 发光形式

LIGHTING OPTIONS



正面发光  
Front Light

正面与背面发光  
Front & Back Light

侧面发光  
Side Light



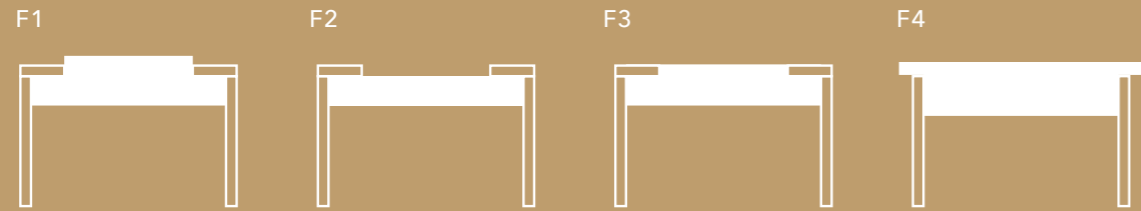
侧面一半发光 (前面)  
Front & Half Side Light

侧面与背面发光 (后面)  
Half Side Light (Back)

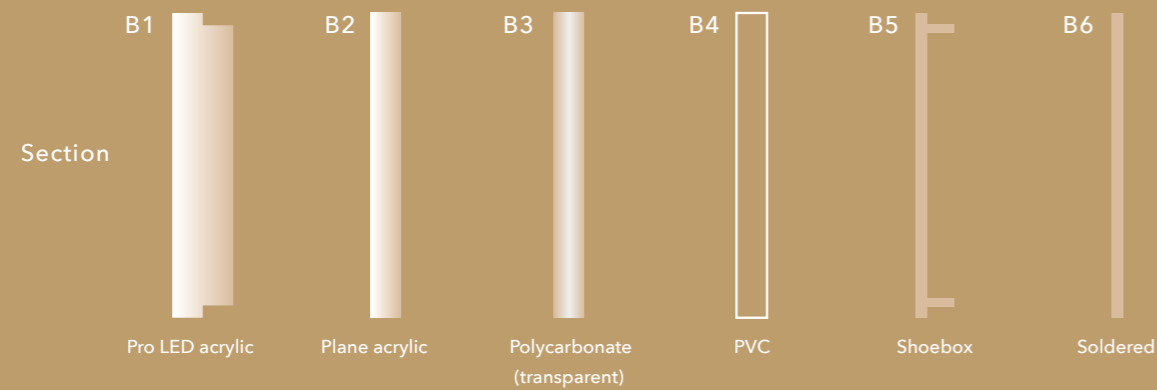
侧面一半和正面发光  
Half Side Light (Front)

背面发光  
Back Light

### 灯箱字面板和底板方式 CHANNEL LETTER FACE AND BACK OPTIONS



### BACK OPTIONS



## 压口字

YJ-M000A

Led Channel Letter -  
Face lit With Trim Cap



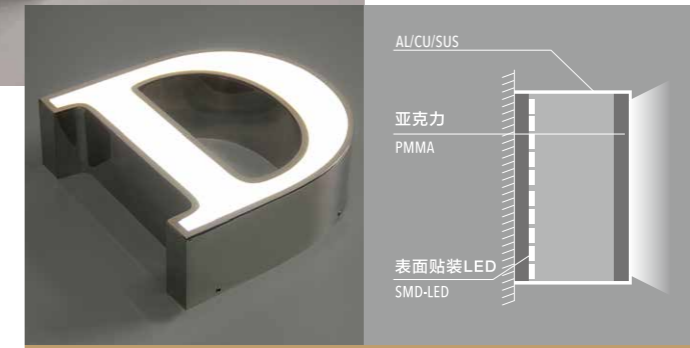
类型 正面发光 YJ-000  
Type Front Light

光源 SMD-LED 定制设计电路板 / LED 模组  
Light Source Custom Made SMD-LED / LED Module

整体厚度: 50~120mm 可选  
The Overall Thickness 50-120mm Optional

尺寸 最细笔画宽度: 15mm  
Size The Finest Stroke Width 15mm

可用于室内外  
Indoor + Outdoor



### CHANNEL LETTER



YJ-M000C

YJ-M000B

# 发光字

Luminous Letter

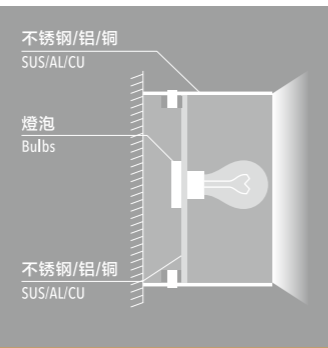


## 灯泡字

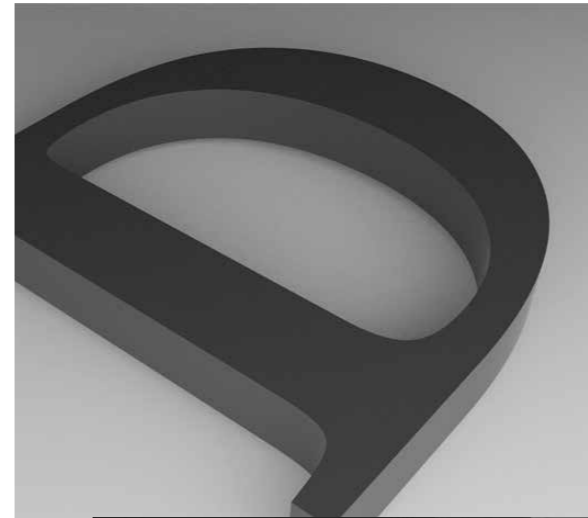
YJ-M002

Bulb Replica

类型 Type	正面发光 YJ-M002 Front Light
光源 Light Source	灯泡 Bulbs
尺寸 Size	整体厚度: The Overall Thickness
	50~180mm 可选 50-180mm Optional
尺寸 Size	最细笔画宽度: The Finest Stroke Width
	40mm 40mm

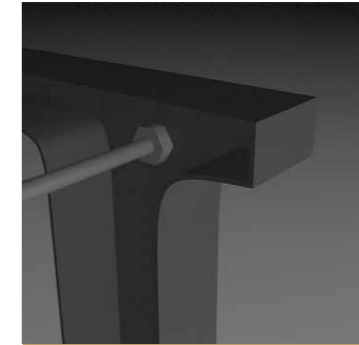


建议用于室内  
For Indoor

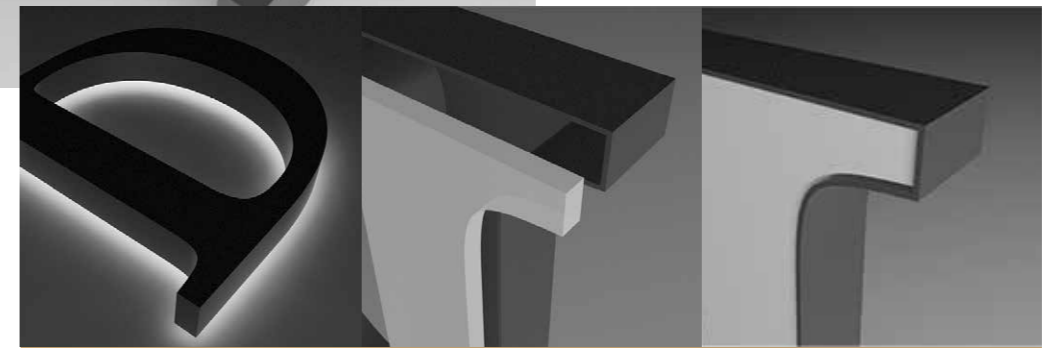


## 金属背面发光字

Metal Back Lit Channel Letter



YJ-M005A



YJ-M005B



YJ-M005C

类型 Type	背面发光 YJ-005A.B.C Back Lit Metal Letter
光源 Light Source	SMD-LED 定制设计电路板 / LED 模组 Custom Made SMD-LED / LED Module
尺寸 Size	整体厚度: The Overall Thickness
	20~80mm 可选 20-80mm Optional
尺寸 Size	最细笔画宽度: The Finest Stroke Width
	15mm 15mm



使用于室内外均可  
Indoor + Outdoor

### LED COLORS



白色透光材料，不同颜色 LED，灭灯时为原色，亮灯时的颜色都为灯光颜色

White light-passing material. Different led color. The sign presents the acrylic color when switched off, and luminous with led color when switched on.



LED 颜色  
LED Light Color



不可直接接入 AC220V 电源  
Don't Connect to 220V AC Power Directly



\* 烤漆颜色可根据标准色系如 Pantone 订制。  
Painting Color According to The Standard Color Code, exp. Pantone Code.

### ACRYLIC COLORS



彩色透光材料，白色 LED，灭灯亮灯时均为彩色透光材料颜色

Colorful light-passing material, white LED, the sign presents the material's colors when switched on and off.



表面处理  
Surface Finish

贴膜 / UV 打印  
Stick Vinyl / UV Printing

侧边处理  
Edge Finish

烤漆 \*  
Painting\*

1. 侧边颜色可选色系 Edge Painting Color Series Option  
PANTONE® RAL NOS

2. 贴膜颜色可选色系 Vinyl Color Series Option



# 发光字

Luminous Letter

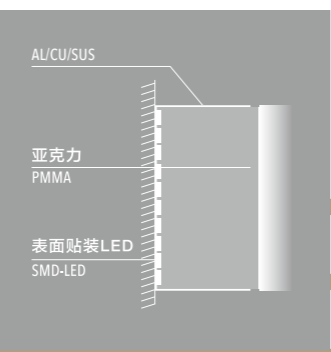


## 金属反口正面发光字

YJ-M006

Metal Channel Letter -  
Front Lit Without Trim Cap

类型 Type	正面发光 YJ-006 Front Light
光源 Light Source	SMD-LED 定制设计电路板 / LED 模组 Custom Made SMD-LED / LED Module
尺寸 Size	整体厚度: The Overall Thickness
	40~100mm 可选 40-100mm Optional
尺寸 Size	最细笔画宽度: The Finest Stroke Width
	15mm 15mm



使用于室内外均可  
Indoor + Outdoor

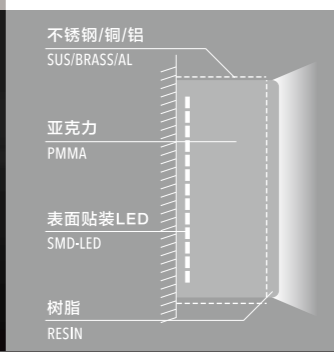


## 树脂字

YJ-M014

Resin letter

类型 Type	正面侧面发光 YJ-014 Front Lit Letter
光源 Light Source	SMD-LED 定制设计电路板 / LED 模组 Custom Made SMD-LED / LED Module
尺寸 Size	整体厚度: The Overall Thickness
	25~60mm 可选 25-60mm Optional
尺寸 Size	最细笔画宽度: The Finest Stroke Width
	8mm 8mm



建议用于室内  
For Indoor

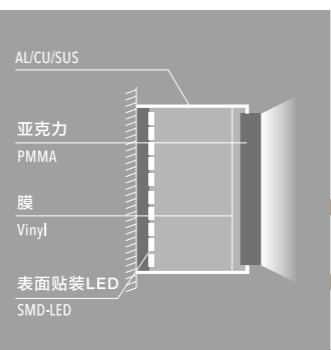


## 金属压口正面发光字

YJ-M009

Metal Channel Letter -  
Front Lit With Trim Cap

类型 Type	正面发光 YJ-009 Front Light
光源 Light Source	SMD-LED 定制设计电路板 / LED 模组 Custom Made SMD-LED / LED Module
尺寸 Size	整体厚度: The Overall Thickness
	50~100mm 可选 50-100mm Optional
尺寸 Size	最细笔画宽度: The Finest Stroke Width
	20mm 20mm



使用于室内外均可  
Indoor + Outdoor

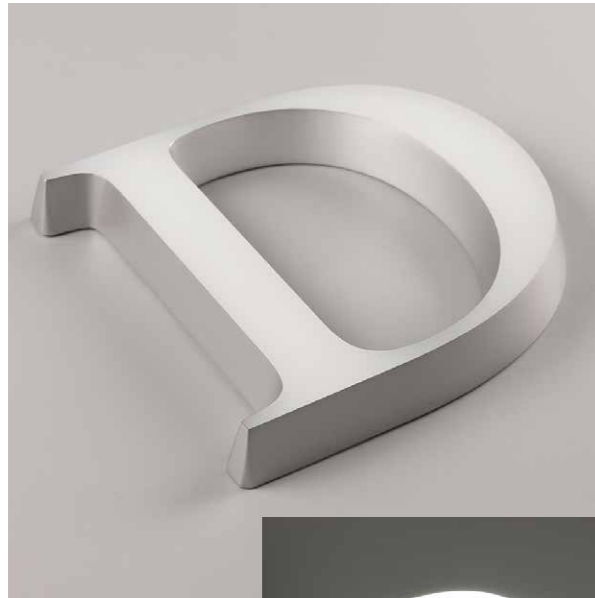
### 安装配件 INSTALL ACCESSORIES





# 发光字

Luminous Letter

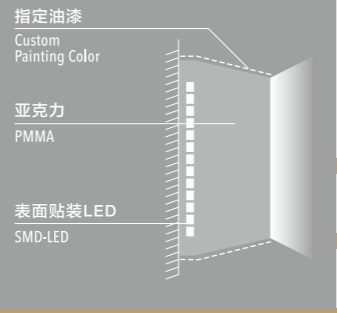
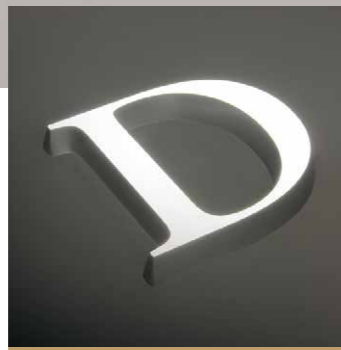


## 斜边正面发光字

YJ-N001

Acrylic Luminous Letter -  
Face Lit With Bevel Edge

类型 Type	正面发光 YJ-001 Front Light
光源 Light Source	SMD-LED 定制设计电路板 Custom Made SMD-LED
尺寸 Size	整体厚度: 20~30mm 可选 The Overall Thickness 20-30mm Optional
	最细笔画宽度: 8mm The Finest Stroke Width 8mm



使用于室内外均可  
Indoor + Outdoor

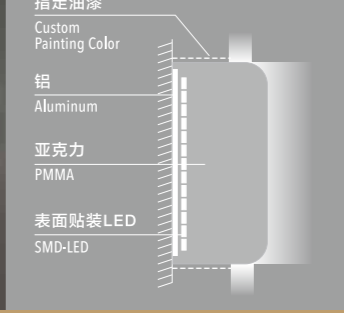
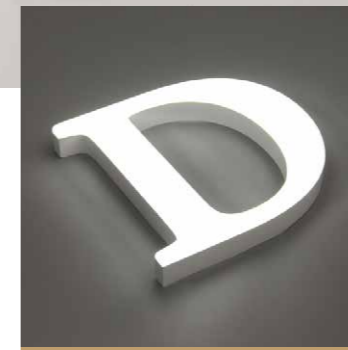


## 透明圆角发光字

YJ-N003

Acrylic Luminous Letter -  
Transparent Round Corner

类型 Type	正面侧面发光 YJ-003 Front And Side Light
光源 Light Source	SMD-LED 定制设计电路板 Custom Made SMD-LED
尺寸 Size	整体厚度: 28~42mm 可选 The Overall Thickness 28-42mm Optional
	最细笔画宽度: 8mm The Finest Stroke Width 8mm



建议用于室内  
For Indoor

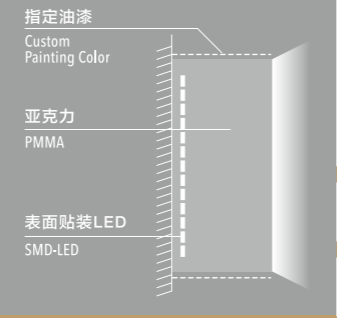
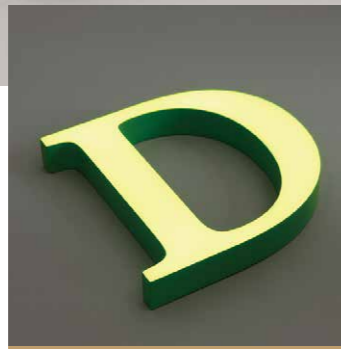


## 直边正面发光字

YJ-N002

Acrylic Luminous Letter -Face Lit

类型 Type	正面发光 YJ-002 Front Light
光源 Light Source	SMD-LED 定制设计电路板 Custom Made SMD-LED
尺寸 Size	整体厚度: 20~30mm 可选 The Overall Thickness 20-30mm Optional
	最细笔画宽度: 8mm The Finest Stroke Width 8mm



使用于室内外均可  
Indoor + Outdoor

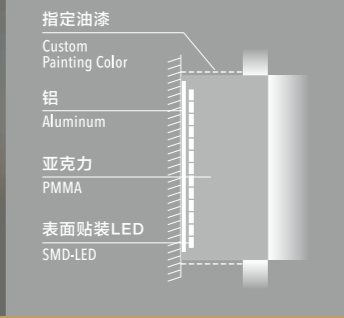


## 透明直角发光字

YJ-N004

Acrylic Luminous Letter -  
Transparent Square Corner

类型 Type	正面侧面发光 YJ-004 Front And Side Light
光源 Light Source	SMD-LED 定制设计电路板 Custom Made SMD-LED
尺寸 Size	整体厚度: 30~45mm 可选 The Overall Thickness 30-45mm Optional
	最细笔画宽度: 8mm The Finest Stroke Width 8mm



建议用于室内  
For Indoor

# 发光字

Luminous Letter

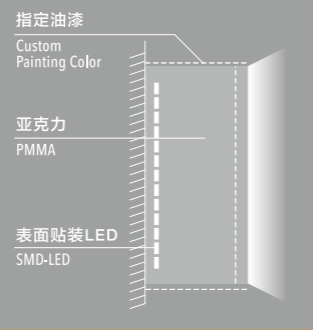
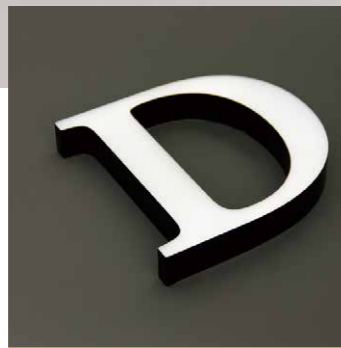


## 黑白板正面发光字

YJ-N007

Acrylic Luminous Letter -  
Black And White

类型 Type	正面发光 YJ-007 Front Light
光源 Light Source	SMD-LED 定制设计电路板 Custom Made SMD-LED
尺寸 Size	整体厚度: 25~35mm 可选 The Overall Thickness 25-35mm Optional 最细笔画宽度: 8mm The Finest Stroke Width 8mm



使用于室内外均可  
Indoor + Outdoor

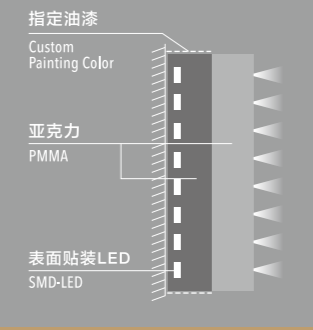
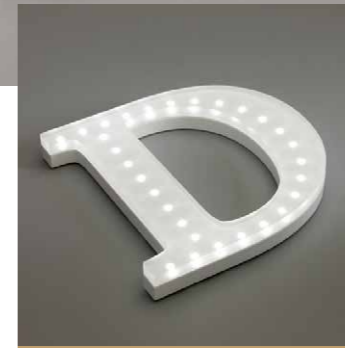


## 灯珠正面发光字

YJ-N010

Acrylic Luminous Letter -  
Skeleton By Opening LED

类型 Type	正面发光 YJ-010 Front Light
光源 Light Source	SMD-LED 定制设计电路板 / LED 模组 Custom Made SMD-LED / LED Module
尺寸 Size	整体厚度: 20~30mm 可选 The Overall Thickness 20-30mm Optional 最细笔画宽度: 8mm The Finest Stroke Width 8mm



使用于室内外均可  
Indoor + Outdoor

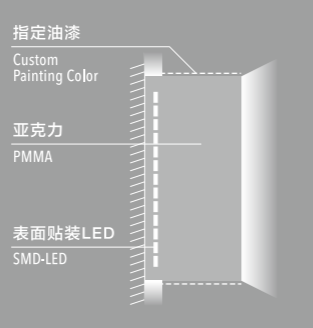


## 直边正面背面发光字

YJ-N008

Acrylic Luminous Letter -  
Face And Back Lit

类型 Type	正面背面发光 YJ-008 Front And Back Light
光源 Light Source	SMD-LED 定制设计电路板 Custom Made SMD-LED
尺寸 Size	整体厚度: 20~30mm 可选 The Overall Thickness 20-30mm Optional 最细笔画宽度: 8mm The Finest Stroke Width 8mm



使用于室内外均可  
Indoor + Outdoor

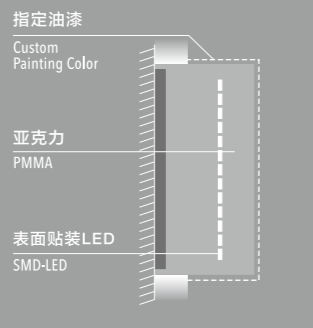


## 直边侧边发光字

YJ-N011

Acrylic Luminous Letter -  
Partial Side Lit

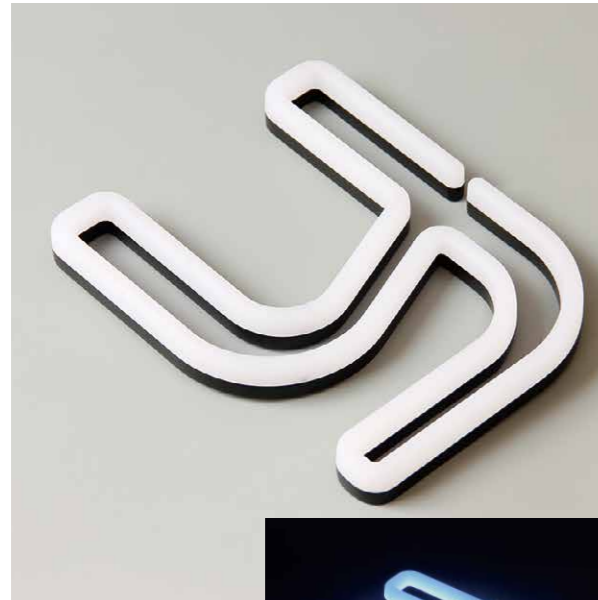
类型 Type	侧面发光 YJ-011 Side Light
光源 Light Source	SMD-LED 定制设计电路板 / LED 模组 Custom Made SMD-LED / LED Module
尺寸 Size	整体厚度: 20~30mm 可选 The Overall Thickness 20-30mm Optional 最细笔画宽度: 8mm The Finest Stroke Width 8mm



使用于室内外均可  
Indoor + Outdoor

# 发光字

Luminous Letter



## 灯条发光字

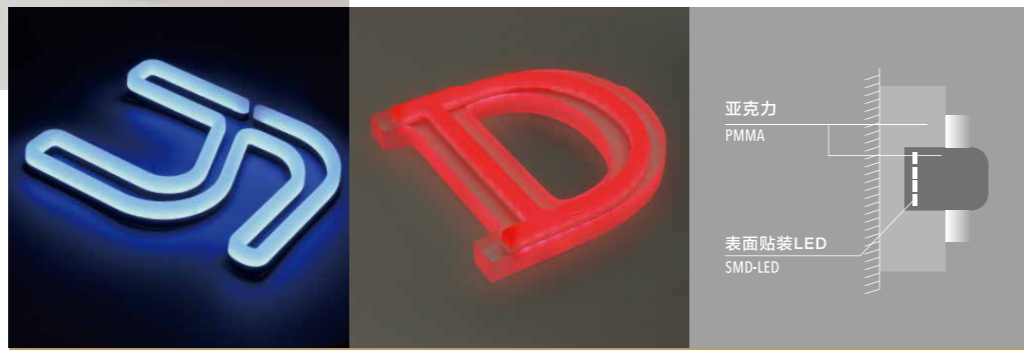
YJ-N012

Acrylic Luminous Letter - Strip Lit

类型 Type	正面发光 YJ-012 Front Light
光源 Light Source	SMD-LED 定制设计电路板 Custom Made SMD-LED
尺寸 Size	整体厚度: 20~30mm 可选 The Overall Thickness 20-30mm Optional 最细笔画宽度: 8mm The Finest Stroke Width 8mm



使用于室内外均可  
Indoor + Outdoor



## 直边侧边发光字

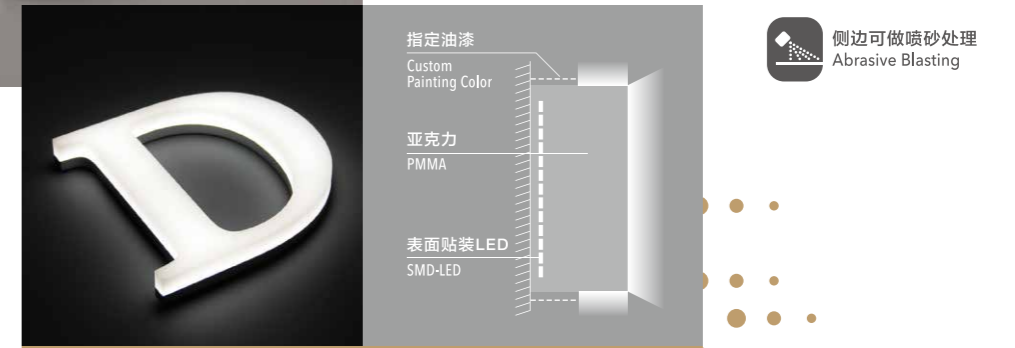
YJ-N013

Acrylic Luminous Letter - Face And Partial Side Lit

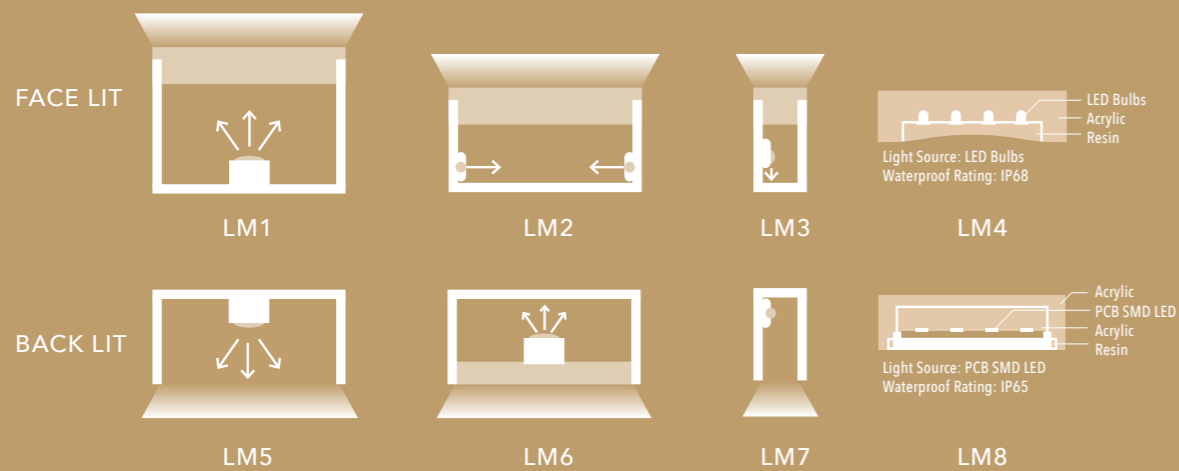
类型 Type	正面和侧面发光 YJ-013 Face And Partial Side Light
光源 Light Source	SMD-LED 定制设计电路板 Custom Made SMD-LED
尺寸 Size	整体厚度: 20~30mm 可选 The Overall Thickness 20-30mm Optional 最细笔画宽度: 8mm The Finest Stroke Width 8mm



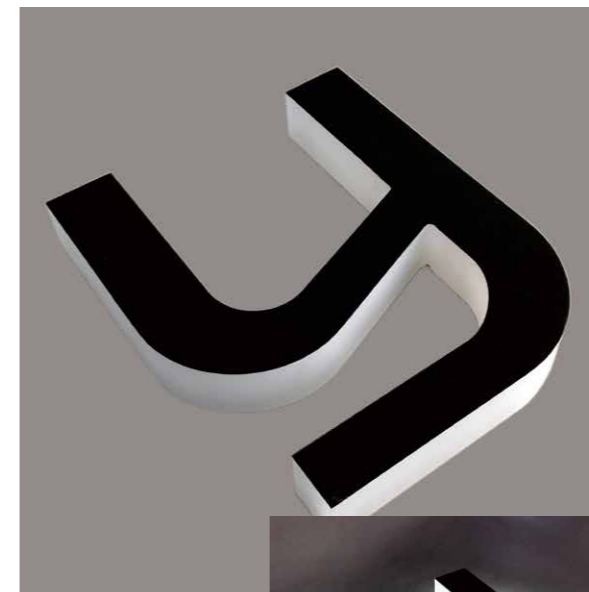
使用于室内外均可  
Indoor + Outdoor



### 排灯方式



Examples of LED enlightening.  
Face and back options can differ from shown examples.  
Given sizes are indications.



## 亚克力侧面全发光字

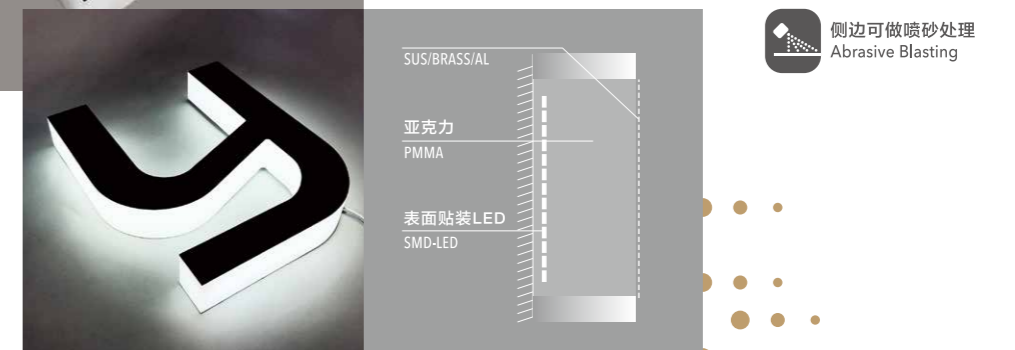
YJ-N015

Side Full Lit Letter

类型 Type	侧面发光 YJ-015 Side Full Lit Letter
光源 Light Source	SMD-LED 定制设计电路板 / LED 模组 Custom Made SMD-LED / LED Module
尺寸 Size	整体厚度: 25~30mm 可选 The Overall Thickness 25-30mm Optional 最细笔画宽度: 25mm The Finest Stroke Width 25mm

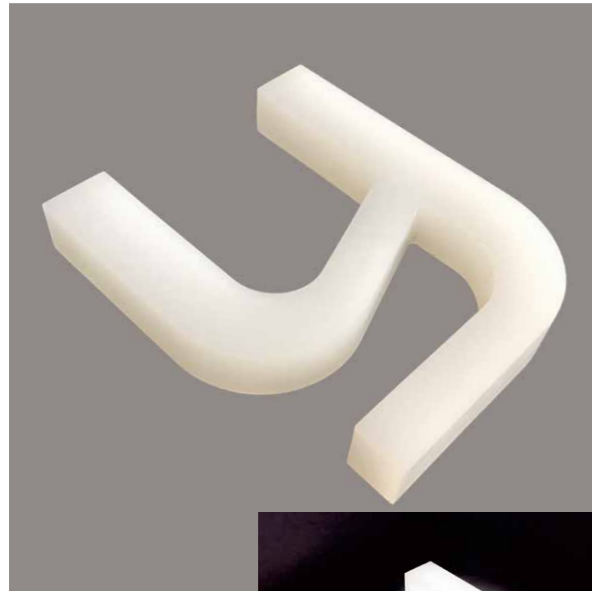


使用于室内外均可  
Indoor + Outdoor



# 发光字

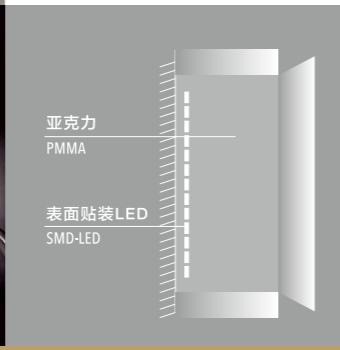
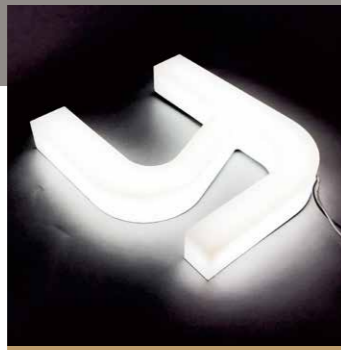
Luminous Letter



## 亚克力侧面正面发光字 YJ-N016

Front And Side Full Lit Letter

类型 Type	亚克力侧面正面发光字 YJ-016 Front And Side Full Lit Letter
光源 Light Source	SMD-LED 定制设计电路板 / LED 模组 Custom Made SMD-LED / LED Module
尺寸 Size	整体厚度: 25~30mm 可选 The Overall Thickness 25-30mm Optional
	最细笔画宽度: 25mm The Finest Stroke Width 25mm



侧边可做喷砂处理  
Abrasive Blas



使用于室内外均可  
Indoor + Outdoor



## 霓虹灯字 YJ-N017

Neon Letter

类型 Type	霓虹灯字 YJ-N017 Neon Letter
光源 Light Source	霓虹灯管 Neon
尺寸 Size	灯管直径: 6, 7, 8, 9, 10, 12, 15, 18, 20mm 可选 Customizable 6, 7, 8, 9, 10, 12, 15, 18, 20mm Optional
	颜色 Color



使用于室内外均可  
Indoor + Outdoor



接单  
Take order



### 01 制作工艺确认图纸

下单前会制作工艺确认图纸, 上面会标注尺寸、工艺、特殊要求等, 在客户确认后开始下单制作  
Preparing the drawing before start the production, the drawing with size, process and crafts, special requirement etc, will start the production after confirmed by the customer



### 02 制作生产文件

制作机器能够识别的文件, 将产品拆分, 分发到各个部门进行同时制作  
Make the file which could be identified by the machine, and split the product, distribute to each department for production at the same time



### 03 激光切割

根据文件, 将需要切割的不锈钢、亚克力等切割出来  
Cut the stainless steel, acrylic etc. According to the file

## PRODUCTION PROCESS 制作流程



### 06 金属焊接

表面进行焊接, 将边与面精准的焊在一起  
Welding the surfaces, weld the side/return with the face with precision

表面进行焊接, 将边与面精准的焊在一起



### 07 打磨、抛光

将边与面之间的焊点打磨平整无缝隙, 镜面进行打磨抛光  
Sanding the welding spot between return and face to smooth and without gap, sanding and polishing the mirror effect finishing

将边与面之间的焊点打磨平整无缝隙, 镜面进行打磨抛光



### 08 贴膜

根据客户指定的贴膜型号和图案, 将画面精准的贴在字的表面、侧面  
Put the vinyl on face and return of the letter, based on customer's confirmed vinyl model and pattern

根据客户指定的贴膜型号和图案, 将画面精准的贴在字的表面、侧面



### 09 喷漆

根据客户指定的色号将油漆均匀喷涂在产品表面  
Paint the letter carefully and evenly with the painting reference confirmed by customer

根据客户指定的色号将油漆均匀喷涂在产品表面



### 10 烘烤

在喷漆完成后, 放入烤箱烘烤, 保证油漆牢固度  
Put the letters into drying room after painted, to ensure the paint firmness

在喷漆完成后, 放入烤箱烘烤, 保证油漆牢固度



### 11 LED贴装

根据图纸需求选择LED灯, 合理科学的排布, 及接线保证字与字的亮度均匀一致  
Install the led according to the drawing, choose the suitable led and distribute reasonably, make sure the wiring between letters to have a even brightness

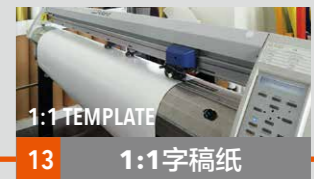
根据图纸需求选择LED灯, 合理科学的排布, 及接线保证字与字的亮度均匀一致



### 12 LED点灯测试

LED组装完成后, 进行可靠性与稳定性测试  
After LED being assembled, perform the reliability and stability test

LED组装完成后, 进行可靠性与稳定性测试



### 13 1:1字稿纸

为了安装方便, 会打印出和字一样大小的图纸和产品一起出货  
Easy installation, we provide the 1:1 scale template together with the letters

为了安装方便, 会打印出和字一样大小的图纸和产品一起出货



### 14 擦拭、检查

根据产品工艺工序, 对工艺、数量、品质进行质检确认  
Quality control to crafts, quantity, quality based on the process step

根据产品工艺工序, 对工艺、数量、品质进行质检确认



### 15 出货前检查

出货前将字摆放到1:1字稿上, 进行最终确认, 包括螺丝、变压器等配件, 拍照留档  
Put the letters on the 1:1 scale template, for the final verification, including screws, transformer, etc, and take the photos for archive

出货前将字摆放到1:1字稿上, 进行最终确认, 包括螺丝、变压器等配件, 拍照留档



### 16 包装、装箱

会根据字的形状和运输方式的不同, 来选择包装箱的包装方式, 减少运输过程中的破坏  
Will choose the packing method based on the letter shape and transportation way, to avoid any possible damage during the delivery

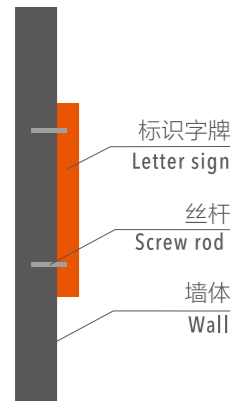
会根据字的形状和运输方式的不同, 来选择包装箱的包装方式, 减少运输过程中的破坏



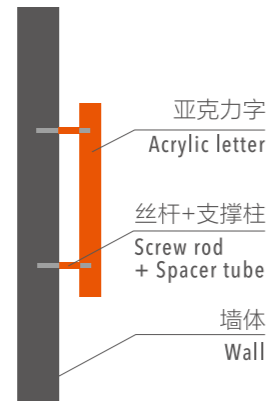
出货  
Shipping

# INSTRUCTION FOR INSTALLATION

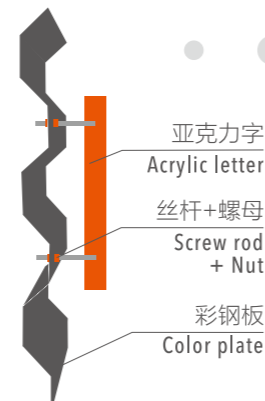
## -Mounting Options 安装方式



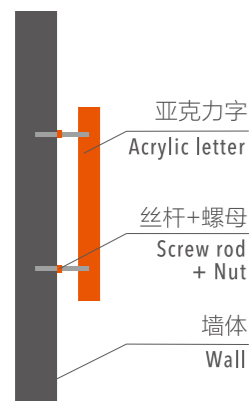
**YJ-M1**  
适合安装在混凝土墙壁上  
Suitable for concrete wall.



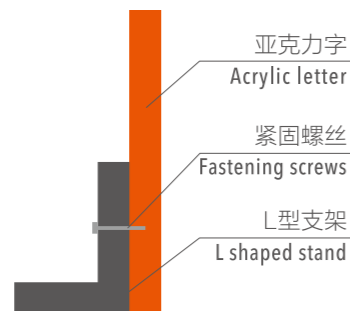
**YJ-M2**  
适合安装在混凝土墙壁上  
支撑柱可控制字与墙壁间距离  
Suitable for concrete wall  
and spacer can control the  
distance.



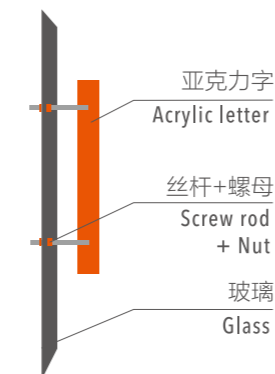
**YJ-M3**  
适合安装在彩钢板墙壁上  
正反面使用螺母将字固定  
Suitable for color plate and  
fix nuts on double sides.



**YJ-M4**  
适合安装在混凝土墙壁上  
Suitable for concrete wall.



**YJ-M5**  
适合安装在屋檐平台上  
L型对字起到好的支撑作用  
Suitable for platform of eave.  
L shaped stand has good  
supporting effect.



**YJ-M6**  
适合安装在玻璃上  
正反面使用螺母将字固定  
Suitable for glass and fix  
nuts on double sides.



**YJ-M7**



**YJ-M8**



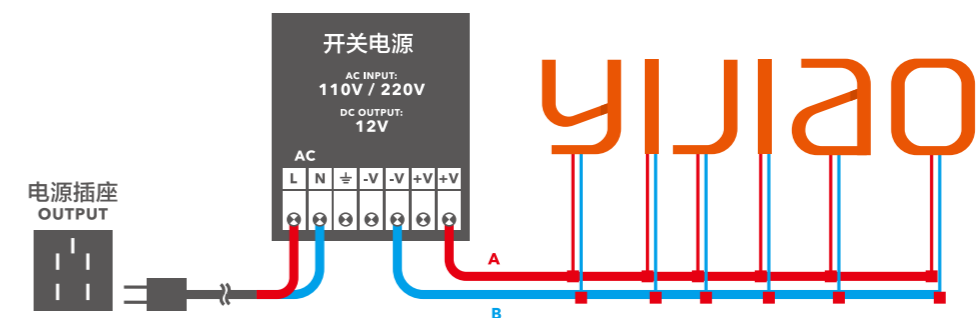
**YJ-M9**

1. 按照下图所示连接导线，根据实际情况决定主线的长度，主线的平方数请查询下表中对应数值。
2. 电线与电线之间连接请使用正规的接线端子，接头处使用绝缘胶带包裹。
3. 所有电线在条件允许的情况下应隐藏起来。
4. 为了LED的最佳使用寿命，建议每24小时至少关闭15分钟。
5. 为了达到充分散热，一般开关电源宜安装在空气对流条件较好的位置，对于普通变压器应注意防水。
6. 开关电源应接在发光字之间，而不是两头。

1. Connecting the wires as above presentation, deciding the main wire length as reality. Please check the main wire square number as following table.
2. Connections between the wires with standard terminals, dealing the layup with insulated adhesive tape.
3. Under the conditions permitted, all the wires should be hidden.
4. Led should be switched off for 15 minutes at least in 24 hours, in order to maximize the use of it.
5. General power supply should be placed in a ventilated location for heat dissipation. The general transformer should be protected from water.
6. Power supply should be connected between the luminous letters instead of the both ends.

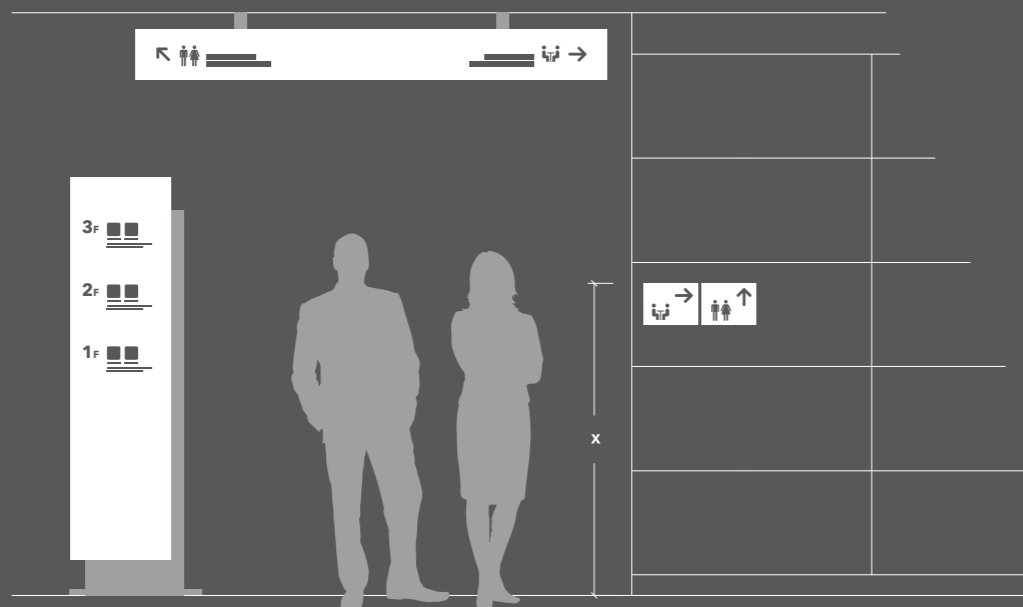
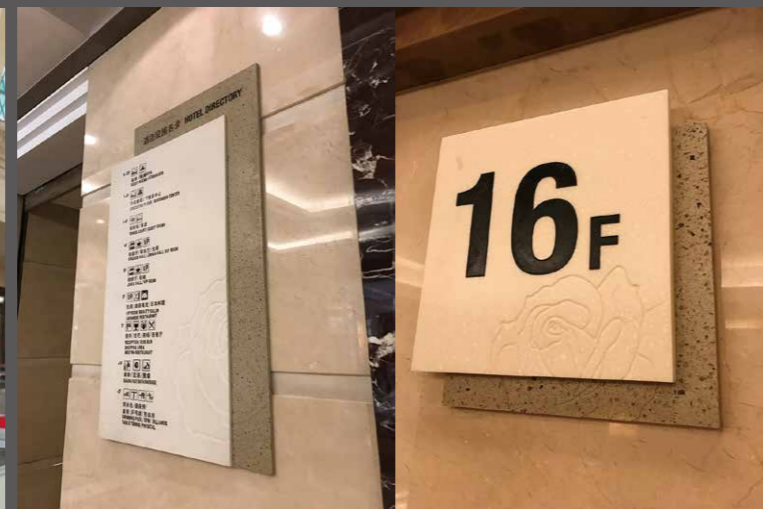
# INSTRUCTION FOR INSTALLATION

## -Power Supply Connecting And Tips 安装说明 - 开关电源连接方式及注意事项



瓦数 Power	电线平方数与距离对应表 Distance in meters from the power source		
	5m	5-10m	10-20m
12W	1mm <sup>2</sup>	1.5mm <sup>2</sup>	2mm <sup>2</sup>
15W	1mm <sup>2</sup>	1.5mm <sup>2</sup>	2mm <sup>2</sup>
20W	1mm <sup>2</sup>	1.5mm <sup>2</sup>	2mm <sup>2</sup>
25W	1mm <sup>2</sup>	1.5mm <sup>2</sup>	2mm <sup>2</sup>
30W	1mm <sup>2</sup>	1.5mm <sup>2</sup>	2mm <sup>2</sup>
60W	1.5mm <sup>2</sup>	2mm <sup>2</sup>	2.5mm <sup>2</sup>
100W	1.5mm <sup>2</sup>	2mm <sup>2</sup>	2.5mm <sup>2</sup>
150W	2mm <sup>2</sup>	2mm <sup>2</sup>	2.5mm <sup>2</sup>

视觉导引系统制造施工





CHAIN STORE sign



Create a  
**PERFECT VISION**

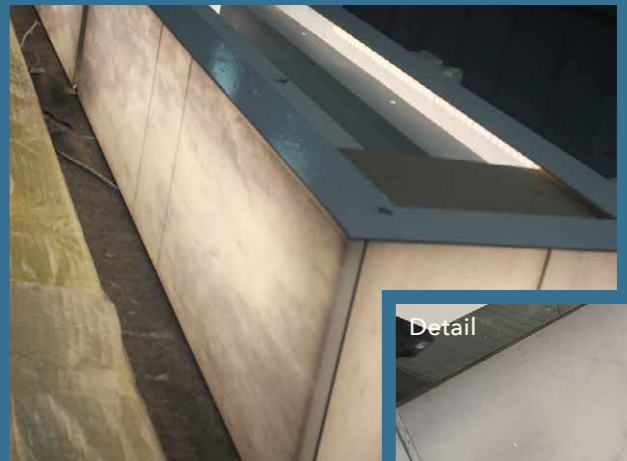
创造视觉 呈现完美

我们注意每个细节，做好每件事，严格的背后，坚持的结果，亿角的团队每天都战战兢兢的面对每个挑战，因为严格的纪律，不容许分毫的错误，因为顾客的托付，不允许分秒的延误，这是亿角人共同的标识。

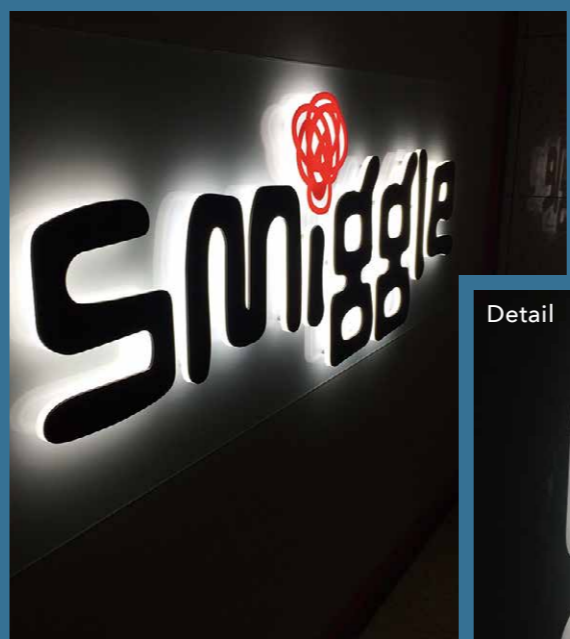
We pay attention to every detail and try our best to do every task, behind the strictness,result of persistence,team of YIJIAO faces each challenge seriously everyday, because of the strict disciplines,there is no subtle errors, the commitment to the customers and no any delay,these are the common identifications of all members of YIJIAO.



LOW LOCATION sign



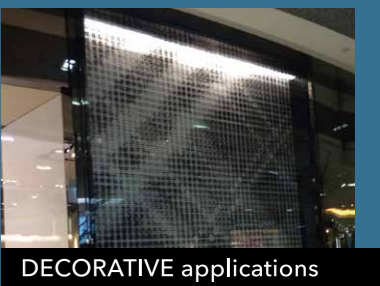
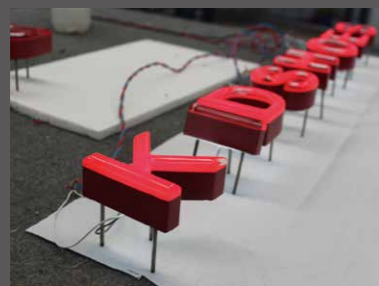
Detail



Detail

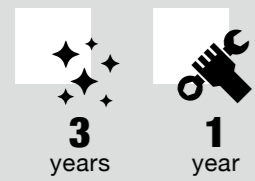


LIGHT BOX



DECORATIVE applications

我们对每一个项目都是有保障的

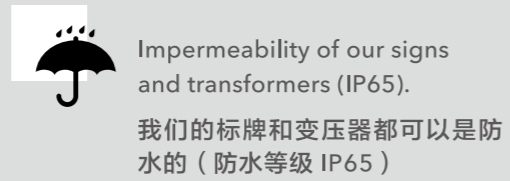


YIJIAO guarantees all of its products for life at least three years. We will refinish or repair for the defective products whatever appearance and structure are defective within one year when manufactured from factory.

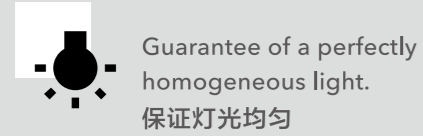
每一个我们发出的标牌都有3年以上寿命质保，无论是出现故障还是外表损坏，享有1年修复保固。



PMMA 100% RECYCLABLE  
亚克力 100% 可回收



Impermeability of our signs and transformers (IP65).  
我们的标牌和变压器都可以是防水的（防水等级 IP65）



Guarantee of a perfectly homogeneous light.  
保证灯光均匀



80% efficiency after 30,000H use.  
在使用 30,000 小时后仍有 80% 的功效



UL standard can be applied to the above products upon request.  
我们可以按照UL标准制作产品。

产品质量保证

OUR GUARANTEES



今天采取可持续的观念来防止未来的一些风险（能耗增加，对高能耗的标牌进行新的处罚的规定的可能）对于尊重环境的先驱者已经朝这个方向努力很多年了，亿角追求团队产品的高质量。

To adopt a sustainable concept today is to guard against the risks of tomorrow (rising cost of energy, possible new penalties for high consumption signs, obligation of extinction after a certain time...). The Precursors who respect the environment has been working in this direction for many years. the YIJIAO Group favors unrivaled quality of its products.

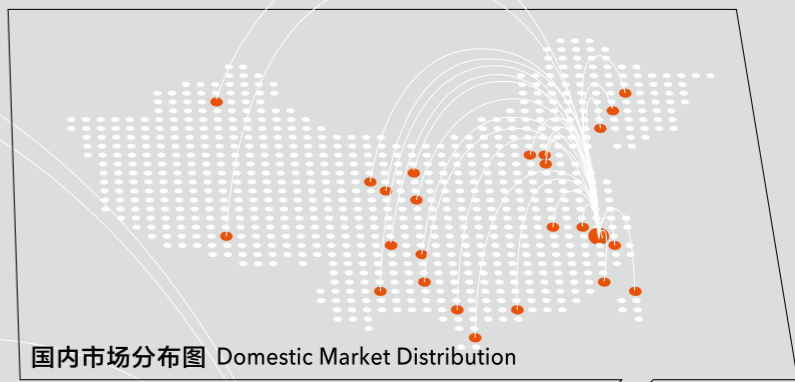
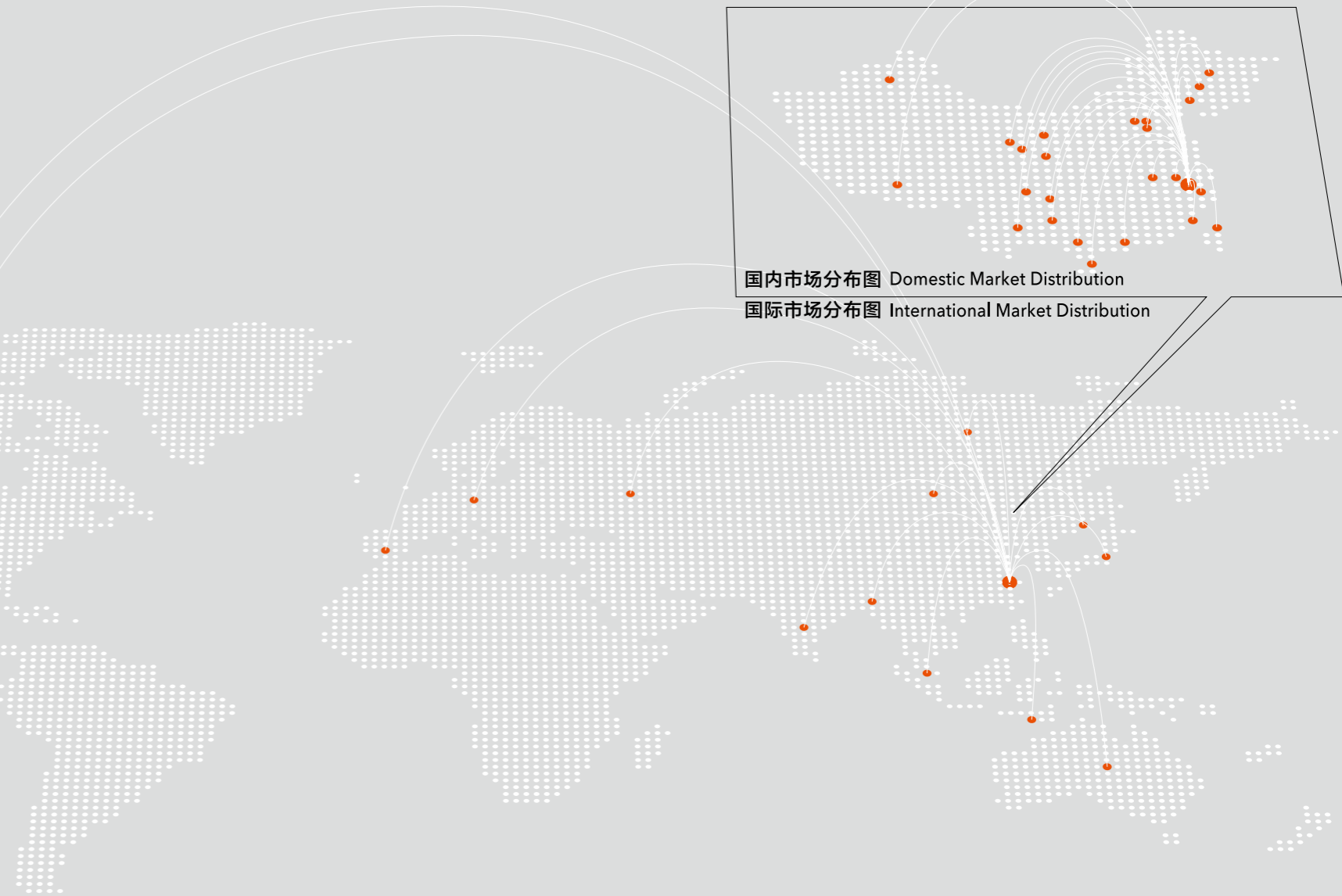


样品展示箱接受订制 -  
样品展示箱 USD\$ 300  
金属材质展示盒 USD\$ 20  
如有其他需求请与我们联系

Samples On Sales  
Illuminated Sign Letters Sample Case: USD\$ 300/unit  
Metal Sign Letter Sample kit: USD\$ 20/unit  
You are welcome to contact us for any requirement!

亿角用心 让每一个角落都是美丽

Devotion Of YIJIAO  
Makes Corners Of  
The WORLD BEAUTIFUL



国内市场分布图 Domestic Market Distribution  
国际市场分布图 International Market Distribution